

IAN SCOTT, *Tiri o te Moana*, Acrylic and silkscreen on canvas, 67 x 90cm, 1990



WINTER CATALOGUE 2010

PREVIEW: 5.30 - 7.30 pm Tuesday 3rd August
EXHIBITION DATES: 4th August - 21st August



WARWICK HENDERSON GALLERY

32 Bath St, Parnell, Auckland, NZ | T/F. +64 9 309 7513

W. www.warwickhenderson.co.nz | E. info@warwickhenderson.co.nz



TOSS WOOLLASTON, *Westcoast Landscape*
Oil on card, 42.5 x 56.5cm, c.1950



PAT HANLY, *Torso Series - Girl in a chair*
Watercolour and mixed media on paper, 22 x 20cm, 1975



INITIALED MHB, *Great Barrier*, Oil on canvas, 29 x 44cm, 1908



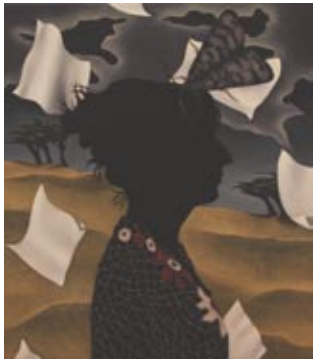
AE ALDIS, *Farm near Auckland* Oil on board, 24x29.5cm, c1890



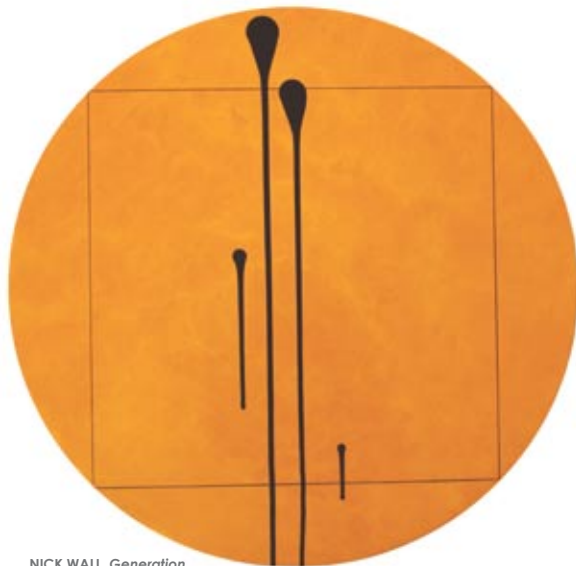
C.W. FOSTER, *Orua Bay, Awhitu Peninsula*, Oil on board, 43x84cm, 1906



MARGARET STODDART, *White Roses*, Watercolour on paper, 49 x 32.5cm, 1890



VIKY GARDEN, *Self Portrait in a Landscape*
Oil/acrylic on canvas, 65.5 x 55.5cm, 2010



NICK WALL, *Generation*
Gesso, acrylic and synthetic polymer on industrial solid support (marante) 66cm tondo, 2010



ROBYN KAHUKIWA, *Kahukura*
Screenprint on Fabriano Artistic paper, Ed. of 30, 44.5 x 59 cm



PHILIPPA BLAIR, *Blush No 1*
Oil on canvas, 60 x 60cm, 2004



EION STEVENS, *Poached Duck*
Oil on shaped board, 38 x 62 cm, 2009



ROBYN GIBSON, *Strangely Normal*
Oil on canvas, 60 x 60cm, 2010



MARK WOOLLER, *Tawharanui Tree Line*
Oil on canvas, 40 x 40 cm, 2010



TYRONE LAYNE, *Pre-Labour Day*
Oil on card, 48.5 x 39.5 cm, 2010



MARK WOOLLER, *Forest River*
Oil on canvas, 40 x 40 cm, 2010



JUSTIN SUMMERTON, *Enlightenment*
Oil on canvas, 46 x 56 cm, 2009

ALAN SOMERVILLE BRONZES



ALAN SOMERVILLE, *Kiwi Soldier*
Bronze Sculpture Ed 50, 30cm high, 2008



ALAN SOMERVILLE, *Mounted Rifles*
Bronze Sculpture Ed 14



ALAN SOMERVILLE, *Sister Mary MacKillop*
Bronze Sculpture Ed 100, 28 cm high, 2007



NIGEL BROWN, *Land and Family*
Hand coloured lithograph 28/30, 57 x 41cm, 1979