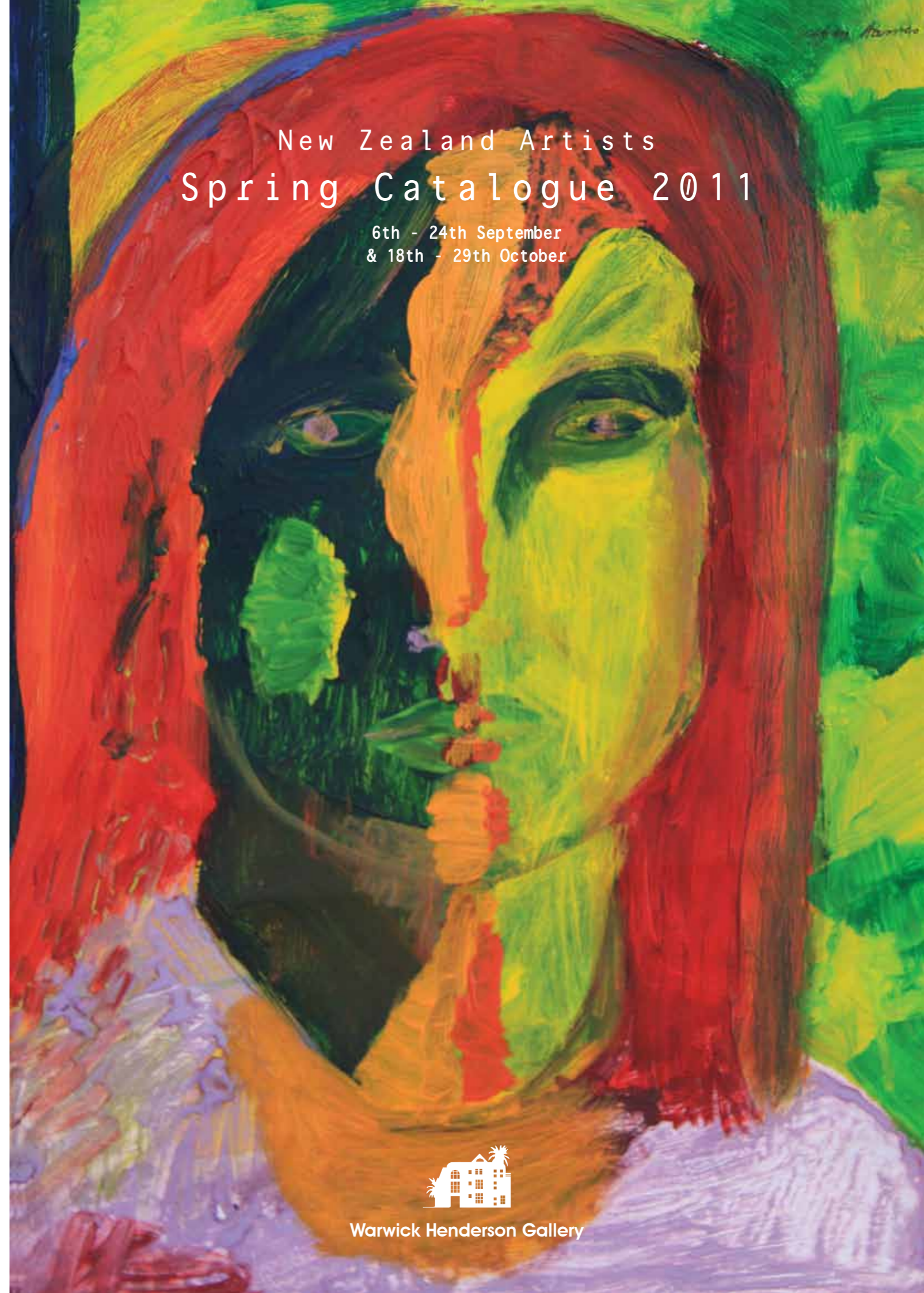


Philippa Blair, Regenerate



New Zealand Artists
Spring Catalogue 2011

6th - 24th September
& 18th - 29th October



WARWICK HENDERSON GALLERY

32 Bath St, Parnell, Auckland, NZ | T/F. +64 9 309 7513 | W. www.warwickhenderson.co.nz | E. info@warwickhenderson.co.nz

Image on front cover: Geoffrey Harris, Portrait of a Woman



Warwick Henderson Gallery

New Zealand Artists Spring Catalogue 2011

We are pleased to present our Spring Catalogue of New Zealand artists in conjunction with the Rugby World Cup Event 2011. Our exhibition includes over 40 paintings of various contemporary artists including paintings from two New Zealand estates. These paintings have been collected from the early periods of New Zealand Art collecting in the 1960s and 1970s when the formation of large private collections was in its infancy. Artists from these collections include WG Baker, a major work from the New Zealand colonial period of a Maori Village on the Waikato River. The matching work to this is in the collection of the Waikato Art Gallery. Works of this nature are becoming increasingly difficult to source particularly with growing interest in this early and fascinating period of New Zealand history. A fine period colonial work by the much underrated artist Albert Edward Aldis is also included in the catalogue. From the same estate as the Baker are two fine John Weeks oils depicting the canal in Saint Maurice in France. The other is an early abstract work from the 1940s, a time when Weeks experimented with abstraction following on from his cubist period paintings. Paintings from other estates include two very fine works by early contemporary New Zealand artists Jeffrey Harris and Nigel Brown. The Harris is a much sought after 1970s portrait while the Brown is a fine example from his early portrait series, a portrait of Vincent Van Gogh dated 1978.



Albert Edward Aldis, *Waikato River*

Other works include paintings by leading New Zealand contemporary artists Fatu Feu'u, Philippa Blair, Dick Frizzell, Robyn Kahukiwa and Keith Patterson. New works by rising star Mark Wooller follow on from his outstanding bushscapes exhibition and will be particularly sought after. New works have also arrived from young surrealist Rozi Demant who is soon to be included in a book being published on International Surrealist Painters. The much admired sculpture by young emerging artist Alex Bartleet will also be included in the exhibition along with two other works and new paintings by Tyrone Layne, Justin Summerton, Raymond Jennings, Amy Melchior and several other New Zealand artists to be confirmed. This catalogue offers a wide range of quality New Zealand art from all eras which we are proud to present to our clients and in particular the many visitors to New Zealand during RWC 2011.



WG Baker, *Waikato River*



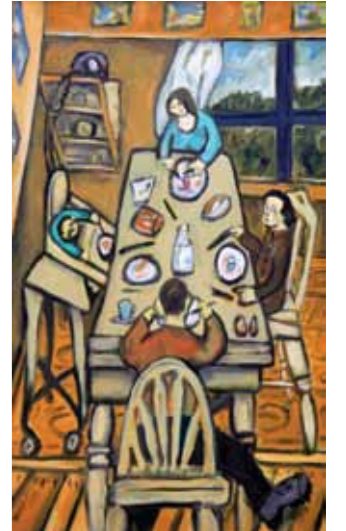
Amy Melchior, *Drifting Out (Detail)*



Alexander Bartleet, *White Rough Cube*



Raymond Jennings, *NZ Collectors Interior*



Nigel Brown, *Family Table*



Nigel Brown, *Head of Van Gogh as an Icon*



Robyn Kahukiwa, *Hine Korako*



Rozi Demant, *The Black Scarf*



Mark Wooller, *Land Fall*



Justin Summerton, *Three elements - Urban, Suburban, Volcanic*



Fatu Feu'u, *Nua Nua Fagamalama*